
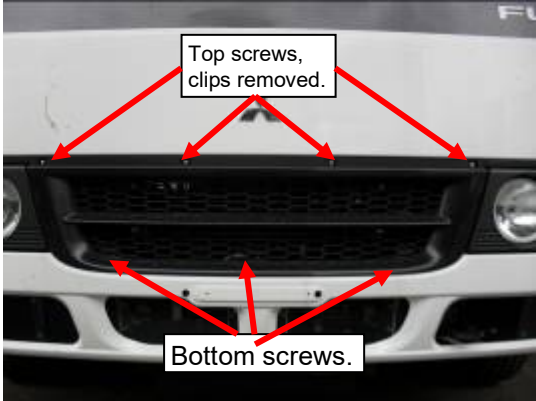




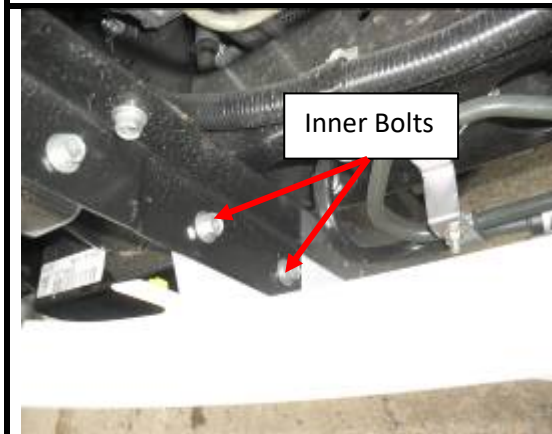
**B3MI0036SY  
 FITTING INSTRUCTIONS  
 ROSA BUS 01- DELUXE 3 BULLBAR**

	<p><b>Step 1</b></p> <ul style="list-style-type: none"> <li>• Park vehicle on flat level surface and apply park brake.</li> </ul>
	<p><b>Step 2</b></p> <ul style="list-style-type: none"> <li>• Remove grille.        Four (4) screws along top of grille (under clips).        Three (3) screws along bottom of grille.</li> <li>• Retain grille, screws and clips for later refitment.</li> </ul>
	<p><b>Step 3</b></p> <ul style="list-style-type: none"> <li>• Remove four (4) stone guard bolts from under bumper on drivers' side.</li> <li>• Allow stone guard to hang clear of bumper.</li> <li>• Retain bolts for later refitment.</li> </ul> <p>Drivers side lower bumper pictured</p>
	<p><b>Step 4</b></p> <ul style="list-style-type: none"> <li>• Remove parker / indicator assemblies from drivers and passengers' side. Two (2) screws per light. Unclip wiring connectors</li> <li>• Retain light assemblies and screws for later refitment</li> </ul> <p>Drivers side pictured.</p>



**Step 5**

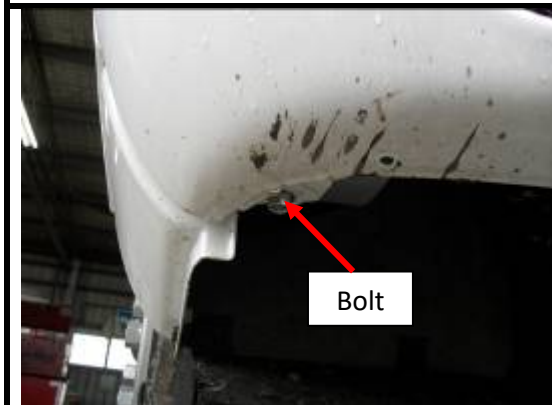
- Remove bumper bar. Four (4) bolts from parker / indicator cavities (two each side)



**Step 5A**

Remove four (4) bolts towards center of bumper (two (2) each side, access through grille cavity). Retain all bolts for later refitment.

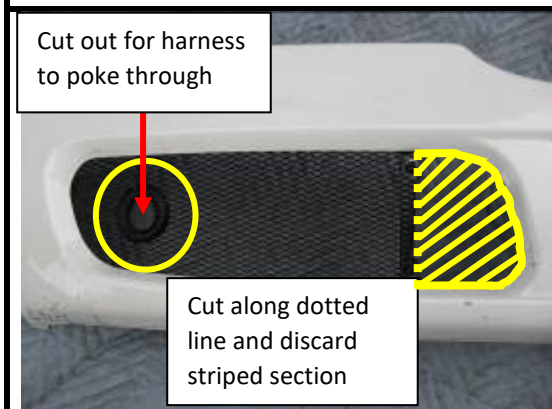
Drivers side pictured, viewed through grille cavity



**Step 3**

- Remove two (2) bolts from lower outer corners of bumper (one (1) each side). Retain all bolts for later refitment.
- Remove bumper and place face down on a blanket.

Drivers side pictured.



**Step 4**

- Make cut outs in drivers side mesh insert in bumper to allow wiring harness and mounting bracket to poke through.
- Touch up cut mesh with black pain and use split tubing to line harness hole.

Drivers side front of bumper pictured.

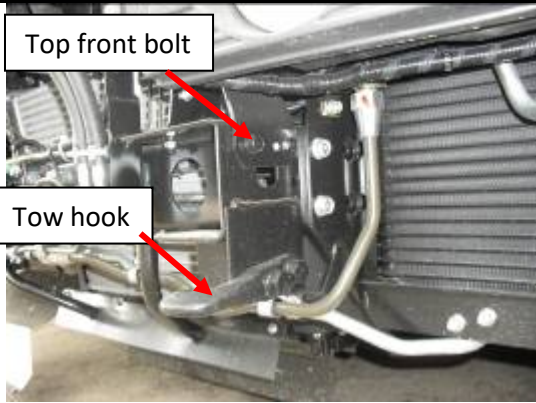


**Step 7**

- Wire in patch harnesses supplied using scotch locks or soldering.

Patch Harness Colour Code

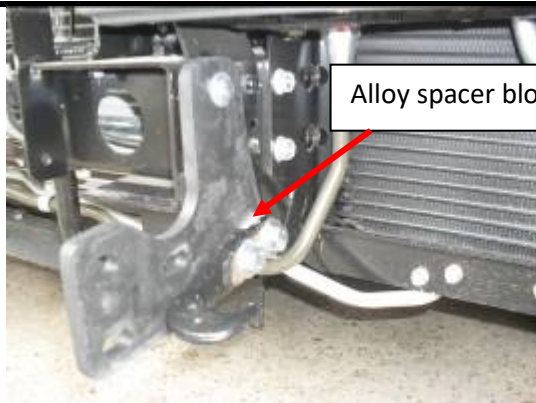
- Green → Indicator
- Brown → Parker
- White → Earth



**Step 8**

- Remove front top bolt from chassis on passenger side.
- Remove tow hook.
- Discard bolts. Retain tow hook for refitment.

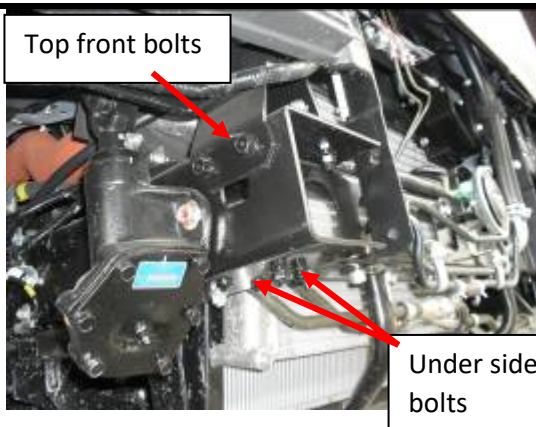
Passenger side pictured.



**Step 9**

- Fit Passenger side mounting bracket using one (1) 3/8 x 1 1/4 bolt, flat washer, spring washer and nut for top hole.
- Flip tow hook over and fit to bottom holes using two (2) 1/2 x 2 1/2 bolts, flat washers and nyloc nuts (supplied) with alloy spacer block (supplied) in rear hole between tow hook and mount. **TIGHTEN ALL BOLTS.**

Passenger side pictured



**Step 10**

- Remove top front bolt from chassis on driver's side.
- Remove two (2) front bolts from under side of driver's side chassis.
- Discard all bolts

Drivers side pictured.

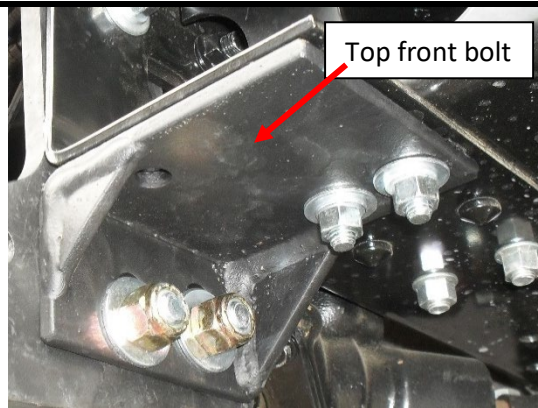




**Step 11**

- Fit mount and angle bracket (supplied) to driver's side using one 3/8 x 1 1/4 bolt, flat washer, spring washer and nut (supplied) in top hole of mount.
- Use two (2) 3/8 x 1 1/4 bolts on wire, flat washers, spring washers and nuts (supplied) in angle bracket rear holes.
- Bolt angle bracket to mount using two (2) 1/2 x 1 1/2" bolts, flat washer and nyloc nuts. **TIGHTEN BOLTS.**

Driver's side pictured.



**Step 12**

- Using front angle bracket hole as a guide, drill 3/8" hole through chassis.
- Touch up hole with a rust preventative and secure using one (1) 3/8 x 1 1/4" bolt, flat washers, spring washer and nut (supplied) **TIGHTEN BOLT.**

Driver's side close-up of angle bracket.



**Step 13**

- Refit bumper bar and grille in reverse of removal.
- Route drivers side patch harness through hole previously made in mesh.
- Route passenger side patch harness through same hole as the mount comes through.



**Step 14**

- Fit bullbar to mounts using 1/2 x 1 1/2" bolts, flat washers and nyloc nuts (supplied)
- Align bullbar with vehicle and **TIGHTEN ALL BOLTS.**
- Connect parker / indicator wiring and check for correct operation.

### ENSURE NUMBER PLATE IS CLEARLY VISABLE

**Note:** When fitting/refitting the licence plate to the vehicle, ensure there is no obstruction to licence plate vision in accordance with local authorities. If required relocate licence plate to an alternate location.

#### Further VFPS Notes:

- Do not attach VFPS to the vehicle using anchorages not intended for this purpose (e.g. engine mounting bolts).
- Do not use this product for any vehicle make or model, other than those specified by the VFPS manufacturer.
- Do not remove the plaque or label from the VFPS.
- Do not modify the structure of the VFPS in any way.
- No accessory or fitment should project forward of the VFPS forward profile.
- ENSURE THESE INSTRUCTIONS ARE LEFT WITH VEHICLE OWNER AND/OR OPERATOR.**

#### IMPORTANT INFORMATION

Periodically check bolts and nuts for correct tightness, especially if travelling on rough roads

#### Fitting Kit

2 – Shoe shaped steel mounting brackets	2 – M10 heavy duty flat washers.
1 – Angle steel mounting bracket.	2 – ½ x 2 ½” bolts.
2 – 3/8 X 1 ¼ bolts on wire.	8 – ½ x 1 ½” bolts.
1 – 3/8 x 1 ¼ bolts.	10 – ½ nyloc nuts.
2 – 3/8 x 1 ½ bolts.	20 – ½ flat washers.
5 – 3/8 nuts.	1 – NC square alloy block.
8 – 3/8 flat washers.	2 – Patch harness (ICHCUSTAL).
5 – 3/8 spring washers.	6 – Scotch locks.



**Lighter  
Stronger  
Better!**

A: 29 Snook St Clontarf QLD 4019  
A: PO Box 122 Margate QLD 4019  
P: 07 3897 5700  
F: 07 3283 1168  
E: info@ecb.com.au  
W: ecb.com.au  
W: customalloy.com.au



**We value your comments**

Dear Fitter,

ECB would like to know how you went with the installation of this product. We value your comment and may need to contact you to clarify some details so please complete your contact details clearly.

We would appreciate if you could complete as many of the following details as possible.

<b>Your Name:</b>	<b>Your contact No.</b>
<b>Product Part No.</b>	<b>Product Invoice No.</b>
<b>Product Description:</b>	<b>Make, model, and year of vehicle:</b>
<b>Product Work Order No.</b>	<b>Company you are from/Company product purchased from:</b>

**Date of Fitment:** \_\_\_ / \_\_\_ / \_\_\_

Was the fitting hardware supplied complete?      Yes      No  
     

If no what was not supplied  
\_\_\_\_\_  
\_\_\_\_\_

Did the installation go well?      Yes      No  
     

Please provide comments  
\_\_\_\_\_  
\_\_\_\_\_  
\_\_\_\_\_

Please draw diagrams if you need to.

**Post to**  
Reply Paid 122  
PO Box 122  
Margate QLD 4019

**Fax to**  
(07) 3283 1168

## DESPATCH CHECKLIST B3MI0036SY

Work Order #		<b>See other side of this page for photos of all mounts</b>
Finish:		
Transport:		
Due Date:		

BK.....2 – Shoe shaped steel mounts – **In bolt kit box.**

BK.....1 – Steel angle bracket – **In bolt kit box.**

OC.....1 – Pair overriders (CA01)

OC.....2 – 95202CUST 10-33V LED Indicator/Park lights–  
(ICLED33INDPRK)

OC.....1 – Bolt Kit in box with mounts

WR.....1 – Pair overriders (CA01) – **Fitted to bar**

WR.....2 – 95202CUST 10-33V LED Indicator/Park lights–  
(ICLED33INDPRK) – **Fitted to bar**

WR.....1 – Bolt kit box – **Taped to bar.**

\_\_\_\_\_/\_\_\_\_\_  
Wrapper's initials / Checker initials



**Is this product “the best it can be” Yes**  
If **NO** fix before continuing

All parts checked and completed by:

Nut and bolts: \_\_\_\_\_ Date    /    /   

Order control: \_\_\_\_\_ Date    /    /   

Final wrap check: \_\_\_\_\_ Date    /    /





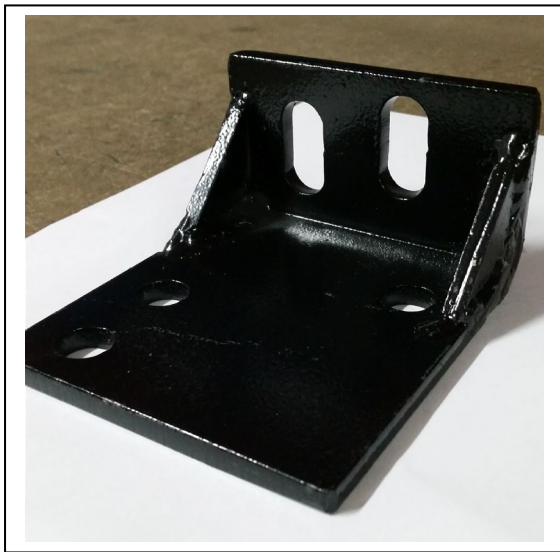
**WORLD'S BEST  
ALLOY BULLBARS**

**Lighter  
Stronger  
Better!**

A: 29 Snook St Clontarf QLD 4019  
A: PO Box 122 Margate QLD 4019  
P: 07 3897 5700  
F: 07 3283 1168  
E: info@ecb.com.au  
W: ecb.com.au  
W: customalloy.com.au



2 – Shoe shaped steel mounts – In bolt kit box



1 - Angle Steel mounting bracket -  
In bolt kit box